

City of Winnetka 2025 Housing

What is a HO

A Housing Needs Ass

is a report inf

Background

- Updated HNA required by agreements
- City of Winnipeg's first C

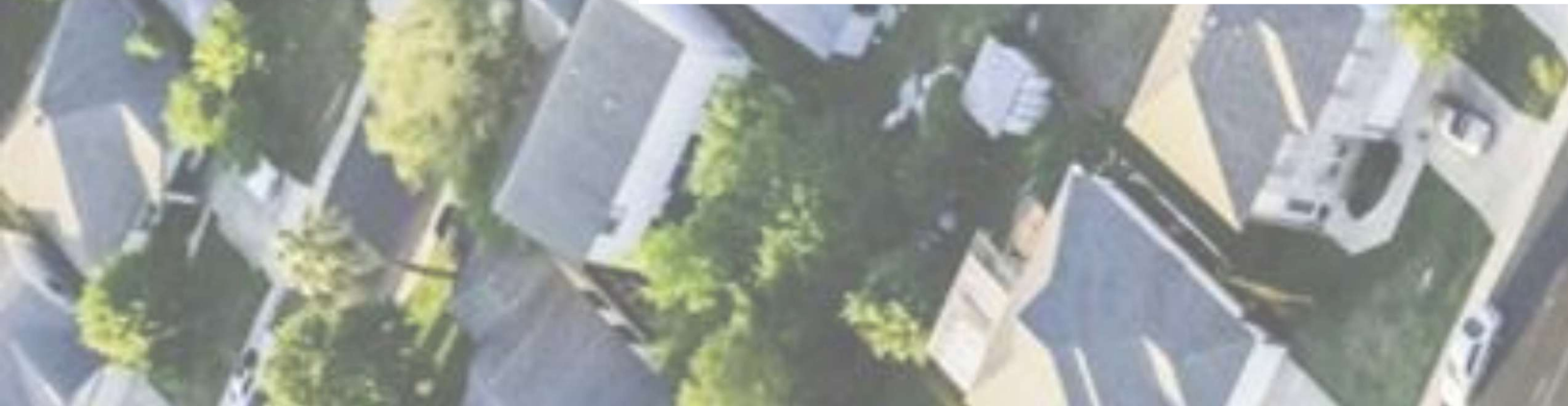
Requirements

HNA required by Federal g
(communities with pop. ov



Overview

The 2025 Housing Needs A



Engagemen

Engagement activities

- 7 focus groups • 2
- 33 interviews • 4
- C

HNVA at a glance

- **Population**
Growth, groups, sizes, incomes
- **Challenges**

HNVA at a glance

- **Specific housing needs**
Accessible, Indigenous, older, youth, Newcomer, gender-k needs

Population

Winnipeg has been g

- **Winnipeg grew 9.2% in three**

More than 2x growth

Challenges

Many Winnipeggers struggle to find a place that meets their needs.

Incomes & A

Affordability challenges:

- Housing in Winnipeg is getting expensive, but incomes are not

Challenges

*In 2020, there were 34
housing need – 11% of*

Challenges

*Homelessness is rising,
experience homelessness*

2024 Street Census highest

Challenges

Some barriers are systematic and those with tenants and those without

Housing supports

The market is responding
Demand is growing for

- 300 400 occupied homes (

Housing supply

Winnipeg's supply of single homes is aging.

The average age is 58 years old city

70 years old in Mature Communities

Housing supports

Development trends are changing.

- 90% apartments are 1- or

Non-market

There is a segment of market housing.

- Non-market housing.

Specific hou

Some Winnipeggers face b

■ 2021

Single mother-led

HH Head under 24

Gender-base

*Access to affordable and
for women and gender d
based violence, and espe*

Housing for

*The transition period for
vulnerable time, especially*

- 18 is the most common

Newcomer |

Without adequate support housing including lack of cultural barriers, discrimination

Indigenous

Indigenous people make

- Indigenous people in Manitoba experience core housing need.

Housing for

There is a growing population

- Affordable assisted living biggest

Accessible

About one-third of Mo

- Few regulatory requirements
build accessible homes

Housing loss

Some of Winnipeg's oldest homes are at-risk of being due to wear and tear, vacated, or fire.

Housing loss

Some of Winnipeg's oldest homes are at-risk of being due to wear and tear, vacated, or fire.

Projecting f

To completely elimin

1

Policy Implications

1. Support the development study, including:

- **Affordable, RGI housing** —

Policy Implications

2. **Maintain and preserve t**
3. **Supports to maintain ex**

Next Steps

- **Communications**
- **HNA used to inform p**

Thank you!