



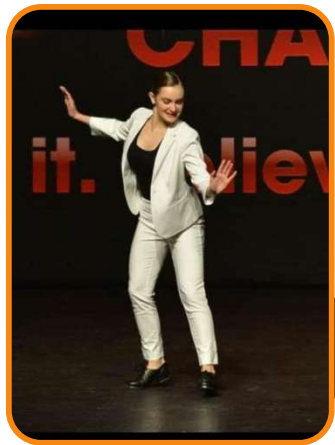
**THAT'LL
NEVER
WORK HERE**



**CHALLENGING THE MYTHS
AROUND CYCLING IN A
WINTER CITY**



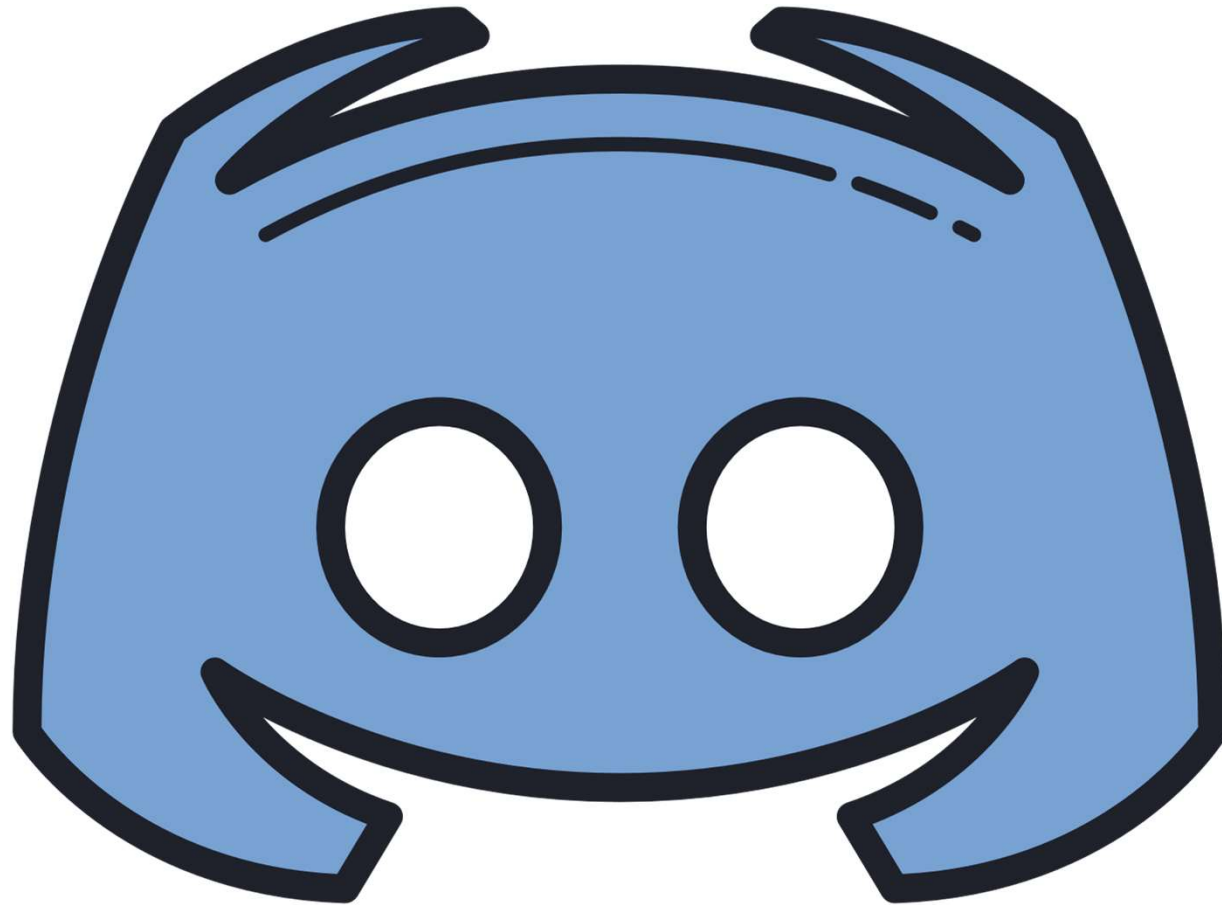
HOW IT STARTED







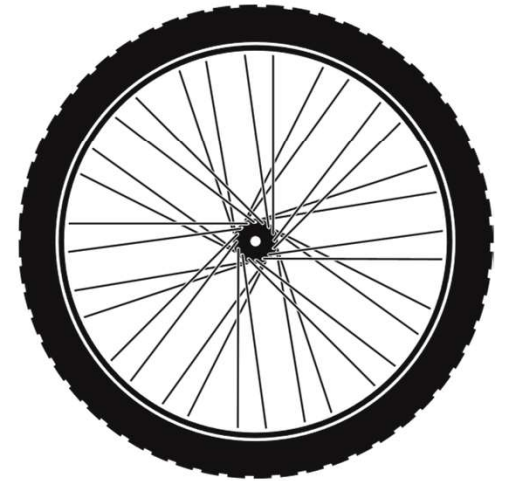




Winnipeg Cycling Discord



**TIPS &
TRICKS**





You Tube




Shifter ✓

@Shifter_Cycling · 107K subscribers · 227 videos

Shifter: A channel about urban cycling, bike commuting and the ways we get around

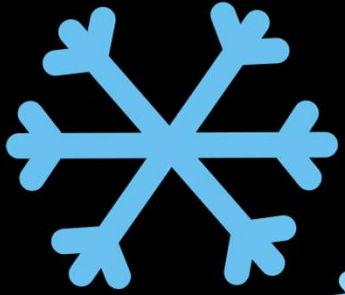
shifter.info and 2 more links

 **Subscribed** 



First Winter Ride













Patty - Brazilian Queen of the N @pattyrwi · Dec 8, 2022

Promote



If you ride a bike in winter as your commute I want to hear everything. 1. Where you are located 2. How long your ride is 3. Do you have to detour in winter 4. Biggest hurdle 5. Favorite accessories to keep warm [#winter](#) [#cycling](#) [@BikeWinnipeg](#)

YEG Mom
@mommypedals

1. Edmonton
2. 30 min commute but up to 2h for errands
3. Detour to side roads because MUPs often aren't clear of snow
4. Drivers not paying attention
5. Ski helmet with visor to keep upper face warm, N95 mask to lower face warm



Halli
@HalliStein

1. Kópavogur
2. Commute is about 20 minutes each way
3. No detours, but one needs spiked tires
4. Hills, unless on ebike
5. Merino wool gloves inside the boots

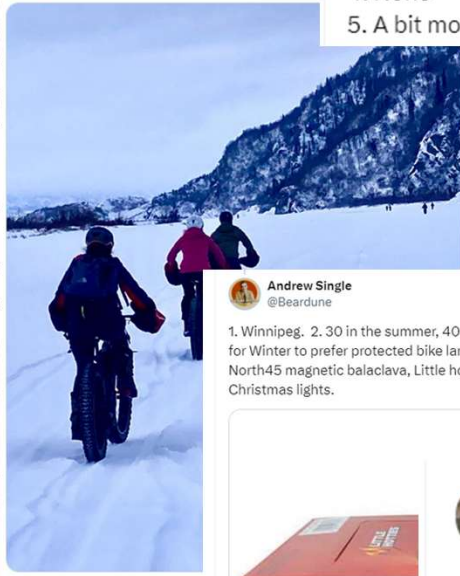
It hasn't snowed yet in southern Iceland from last winter.



4:42 PM - Dec 10, 2022

James P Bennett
@Souldotna

I'm retired, so only ride when I want and for fun, w/ my longest/coldest ride was to Knik Glacier, north r/t with temps of -15F/-26C.



Andrew Single
@Beardune

1. Winnipeg. 2. 30 in the summer, 40-70 in the winter. 3. I adjust for winter to prefer protected bike lanes. 4. Snow clearing. 5. I use North45 magnetic balaclava, Little hotties adhesive toe warmer Christmas lights.



Pekka Tahkola
@pekkatahkola

1. #Oulu, northern Finland
2. Commute destinations vary a lot from 1 km to 10 km
3. No, sometimes happy to have even shortcut
4. None
5. A bit more clothes

Misty Bromley
@misstea10

1. Northwest Winnipeg. 2. 20-30 min. 3. Sometimes.
4. Motor vehicles overtaking too close. There are no protected paths between my home and work
5. I'm a knitter. I just add more wool.

Jim Marino
@fastnlight

Lake Tahoe. 14 miles round trip. No detours required. I use studded tires. Biggest hurdle is windy days. Wind and cold are tough. Keys to keeping warm....1) good gloves/mittens. 2) layers for clothing, but don't over dress, you will get warm from riding. 3) softshell clothes.



Jere M.
@JerppaM

1. Utrecht/Amsterdam
2. ~30 mins per direction but in two parts, last mile to and from the train
3. No, never
4. Bike paths are too busy
5. Gloves













Happy
Birthday
to me!









2024
**WINTER
CYCLING
CONGRESS**
A BRIDGE TO A HEALTHY FUTURE

February 22-24, 2024

yegcyclingcongress.ca





The myths

1. Bike lanes are bad for business
 2. We can't afford them
 3. No one will use them
-



Why do people not ride their bikes in winter?



Why riding a bike changes your life

1. Money
2. Health
3. Environmental Impact
4. Community: Bike Coloured Glasses





Rob Jenner
June 5, 1963 - June 6, 2024
Gone but not forgotten



THE BIG TENT

Where do you
come in?



How to find your people





Just add coffee

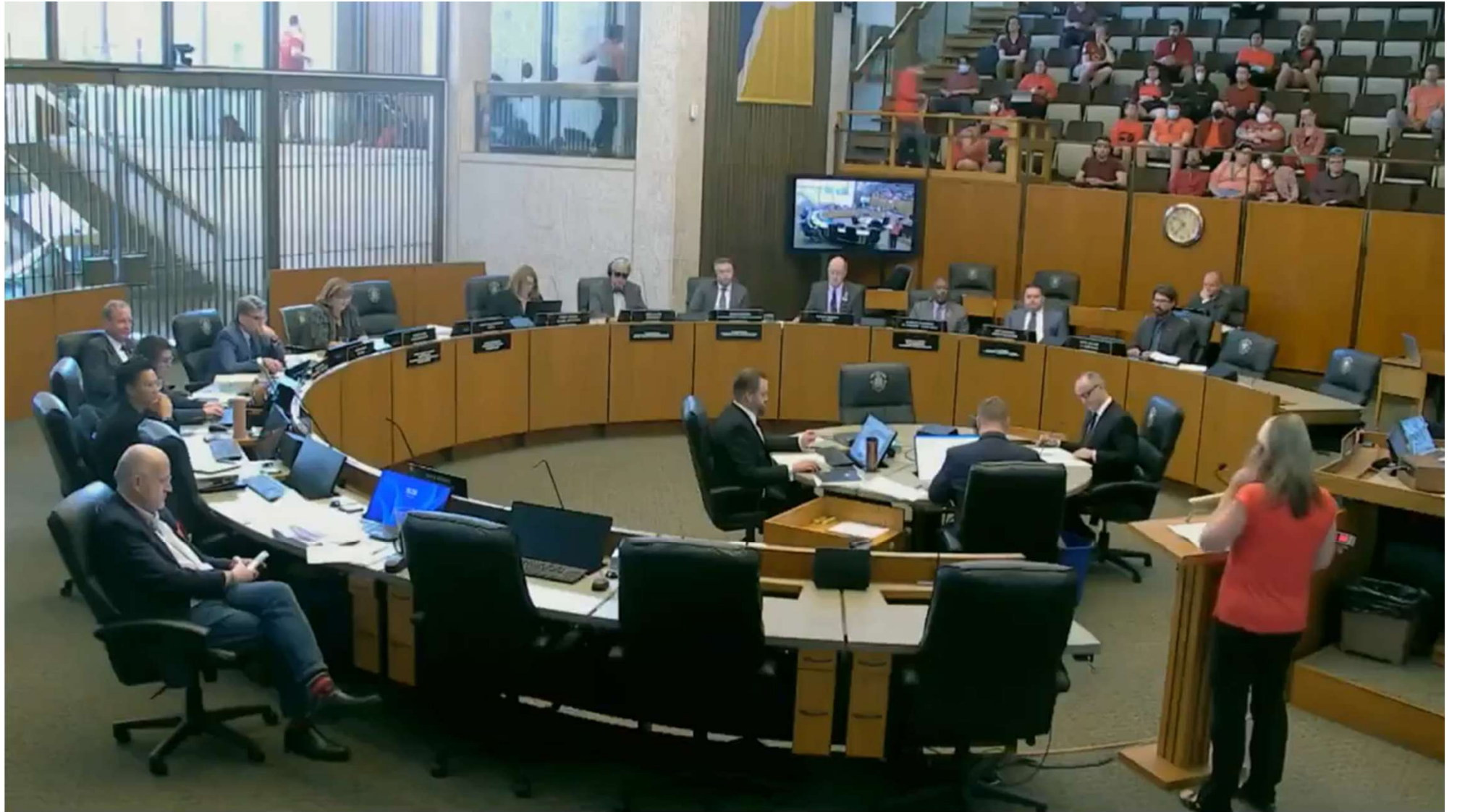


Winnipeg City Council Meeting - 2025 10 30



City of Winnipeg
6.3K subscribers







Winnipeg City Council Meeting - 2025 10 30



City of Winnipeg
6.3K subscribers





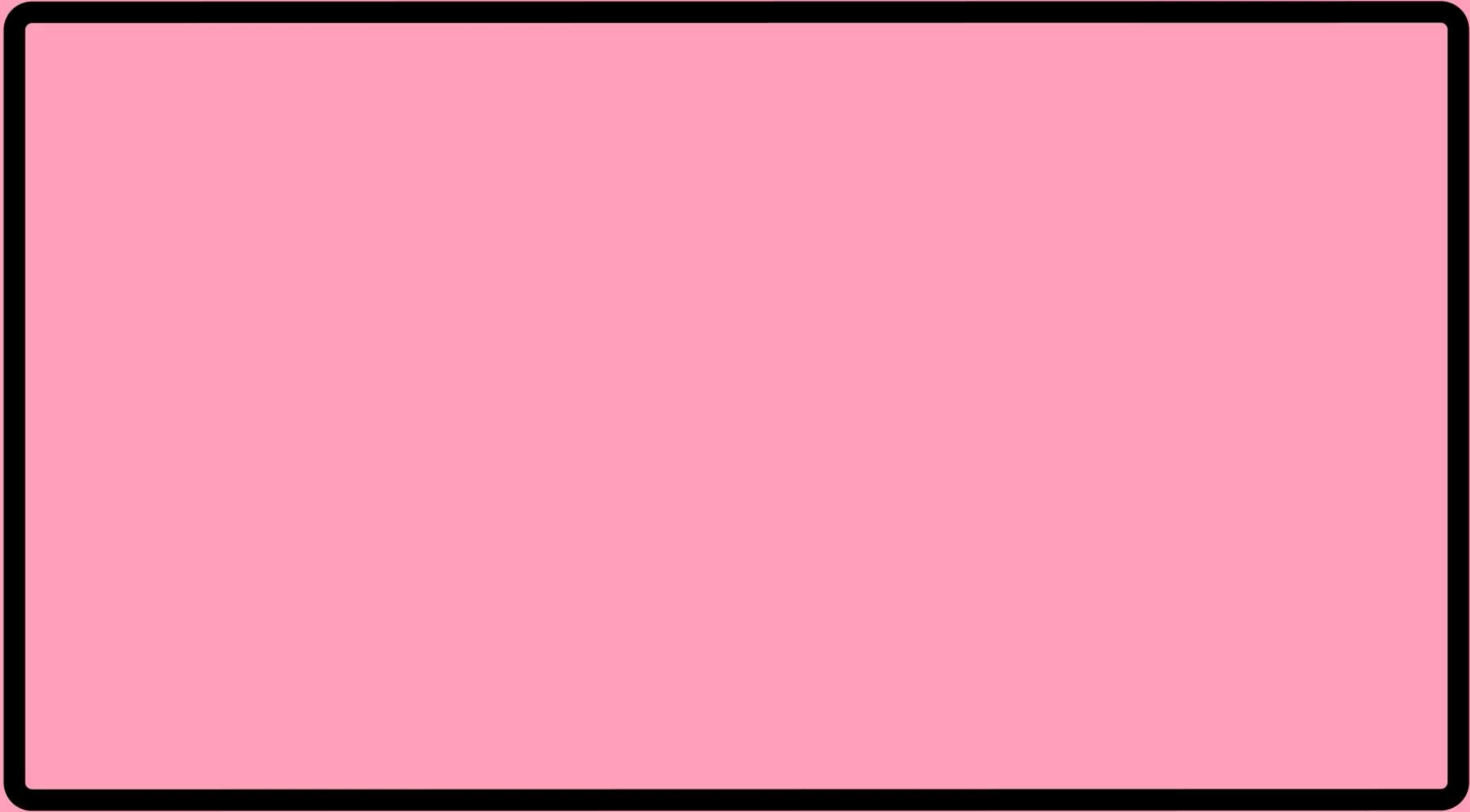
**That's her
problem!**
podcast







Ballotbabes.com





**THAT'LL
NEVER
WORK HERE**

PATTYBIKES.COM

